



TECH INFO
XGR1 | EXPANDABLE GUARDRAIL



GUARDRAIL XGR1

GET MORE OUT OF YOUR EXISTING SCAFFOLDING SYSTEM

XGR1 is the clever way to keep existing scaffolding material vital. One component is all that is needed to implement an optimal advanced side protection. This is ensured by the innovative mechanism of the XGR1 expandable guardrail. Simply place it on the upper tube connector of a frame, loosen the handle, fold it out, latch it in and you're done. The construction heights remain unchanged. This is how your old scaffolding system becomes your new one.

DIMENSIONS: available from 1.5 m to 3.07 m

COMPATIBILITY: construction heights remain unchanged

SAFETY: TRBS 2121 implementation through assembly from the lower scaffold level

STANDARDS: EN 12811-1 & EN13374

SYSTEMS: SUPER, RINGSKAFF, FRAMESKAFF

EXPANDABLE GUARDRAIL XGR1 | 2022-10-EN

STRONGER. **TOGETHER.**

 **scafom-rux**

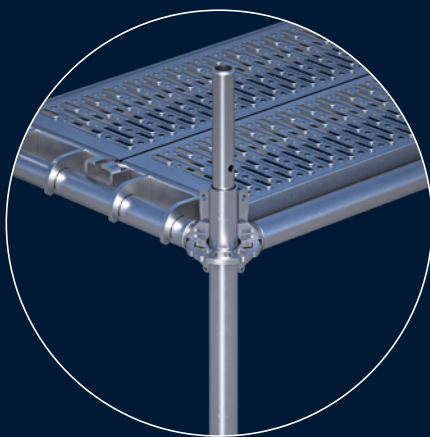


UNFOLDED - FITS! THE INNOVATIVE EXPANDABLE GUARDRAIL FOR YOUR SCAFFOLDING SYSTEM

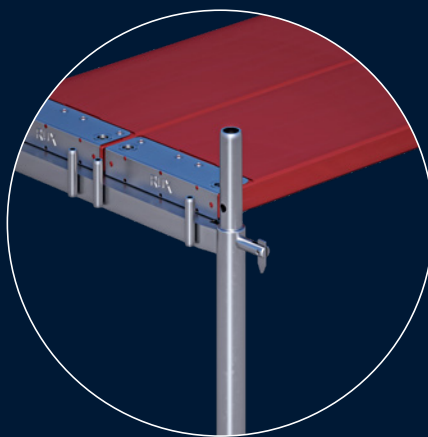
The XGR1 expandable guardrail is compatible with your RINGSCAFF, SUPER or FRAMESCAFF scaffolding system. You can simply continue to use your existing material. With each system variant, the scaffold bays can be opened at any time, whereby XGR1 can remain in the transport position on the scaffold standard.

TECHNICAL DATA

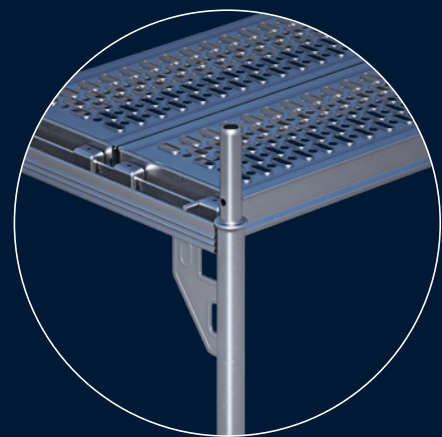
System	Length (mm)	Weight (kg)	Article no.
FRAMESCAFF	2572	15.80	E04FS0226
FRAMESCAFF	3072	17.23	E04FS0227
RINGSCAFF	1572	10.67	E04RS1604
RINGSCAFF	2072	12.14	E04RS1605
RINGSCAFF	1500	10.31	E04RS1645
RINGSCAFF	2000	11.94	E04RS1646
RINGSCAFF	2572	12.54	E04RS1606
RINGSCAFF	3072	15.14	E04RS1607
RINGSCAFF	2500	12.17	E04RS1647
RINGSCAFF	3000	14.89	E04RS1648
SUPER	2500	17.3	E04SR0312
SUPER	3000	20.0	E04SR0313



RINGSCAFF



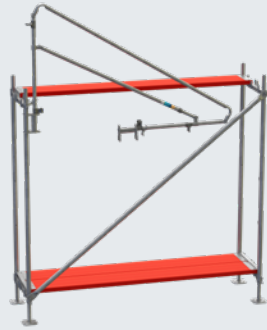
SUPER



FRAMESCAFF

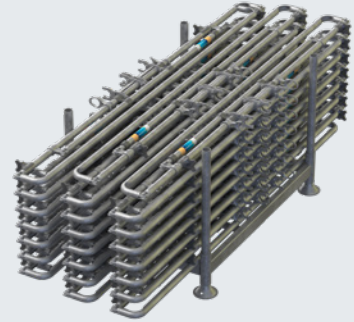
Assembly and dismantling according to TRBS

XGR1 is assembled from the underlying scaffolding level and thus complies with the regulations of TRBS 2121.



Low transport volume

The folding mechanism allows XGR1 to be transported in a space-saving way.



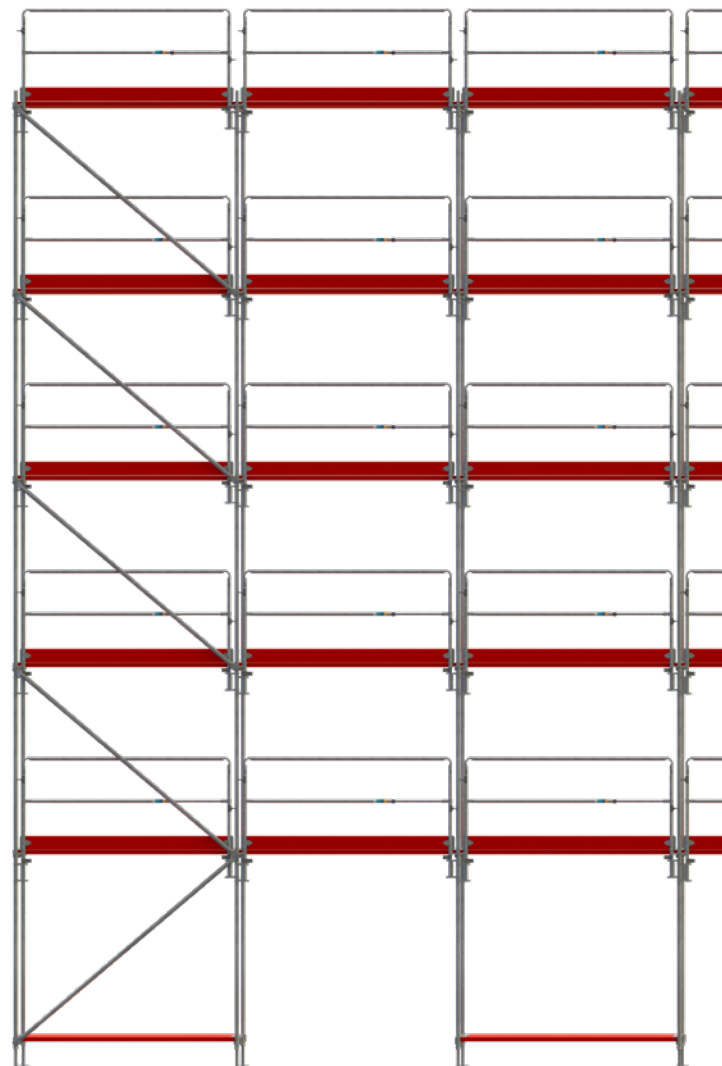
Foldable at any time

Even while XGR1 is installed in the scaffold, scaffold bays can be opened as required. XGR1 can be folded and remain on the scaffold in the space-saving transport position.



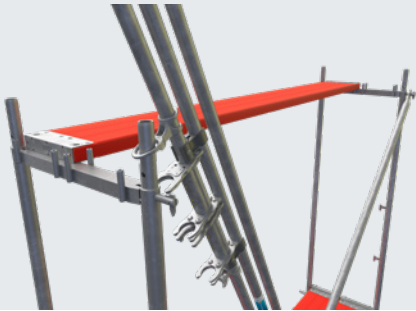
Faster assembly and dismantling

The folding mechanism makes XGR1 particularly easy to handle. Assembly and dismantling can thus be carried out much faster than with alternative solutions.



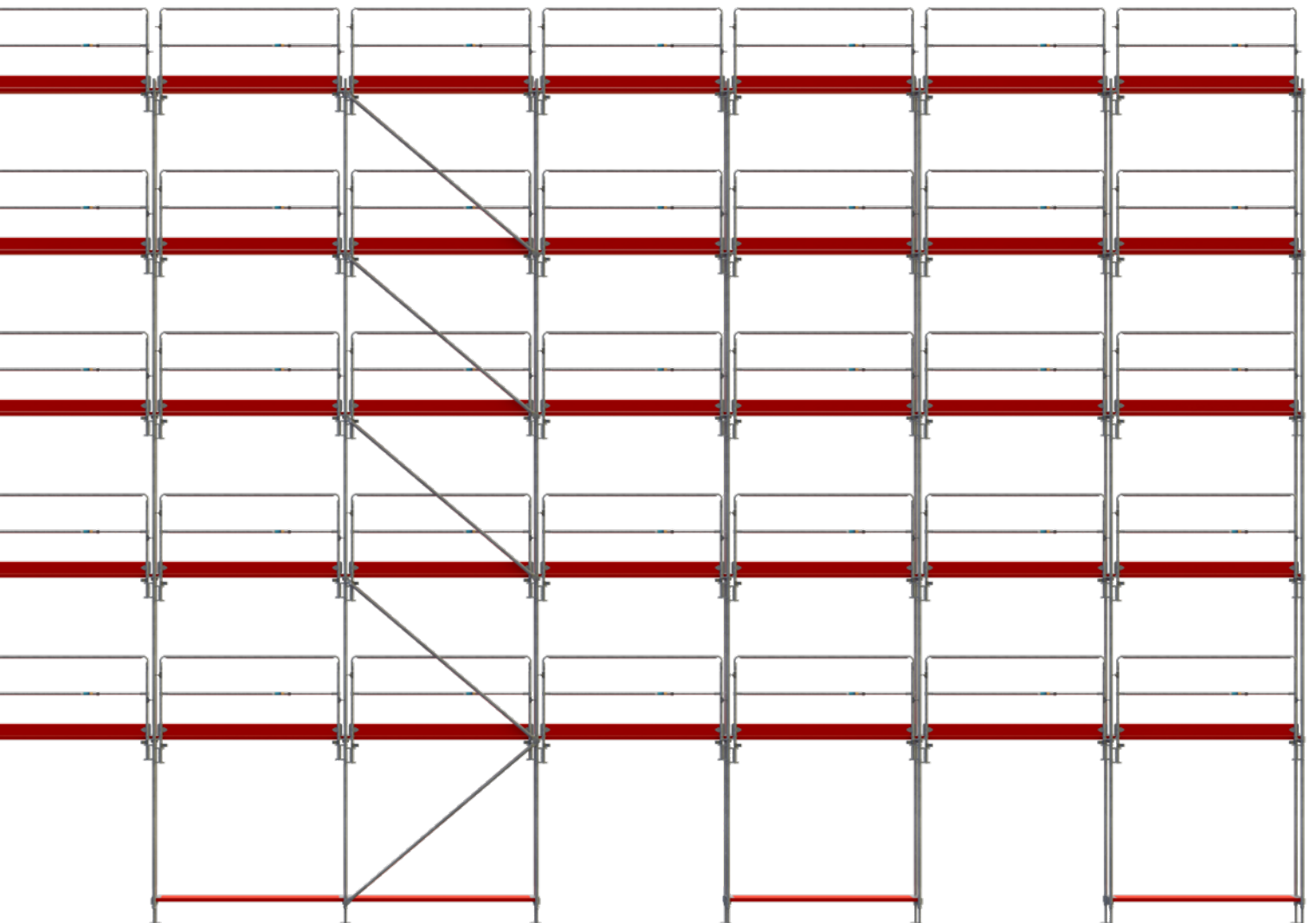
Assembly from the in- and outside possible

The folding railing can be mounted and dismantled from the inside as well as from the outside of the scaffold.

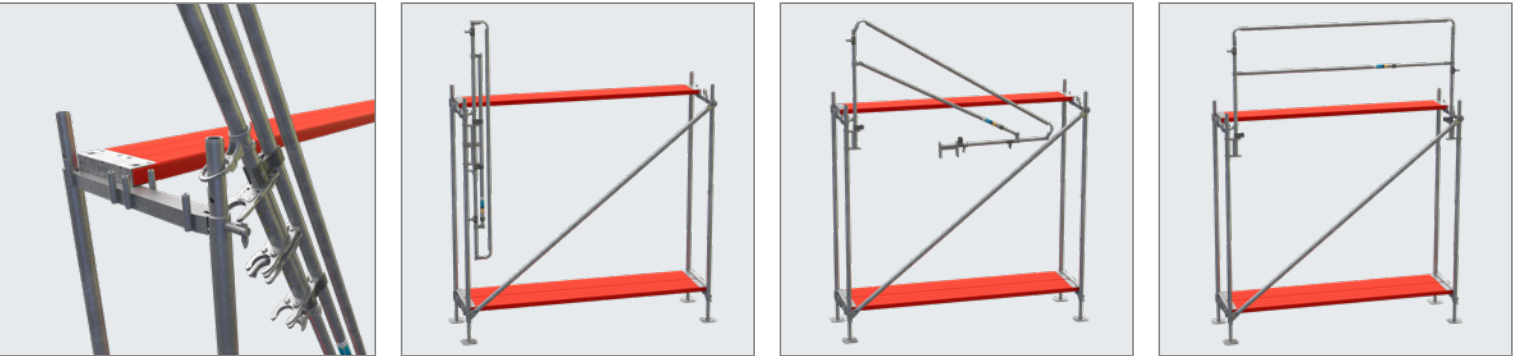


Compatible

XGR1 was developed for use with RINGSCAFF, FRAMESCAFF and SUPER scaffolds. This keeps the investment for system users particularly low.

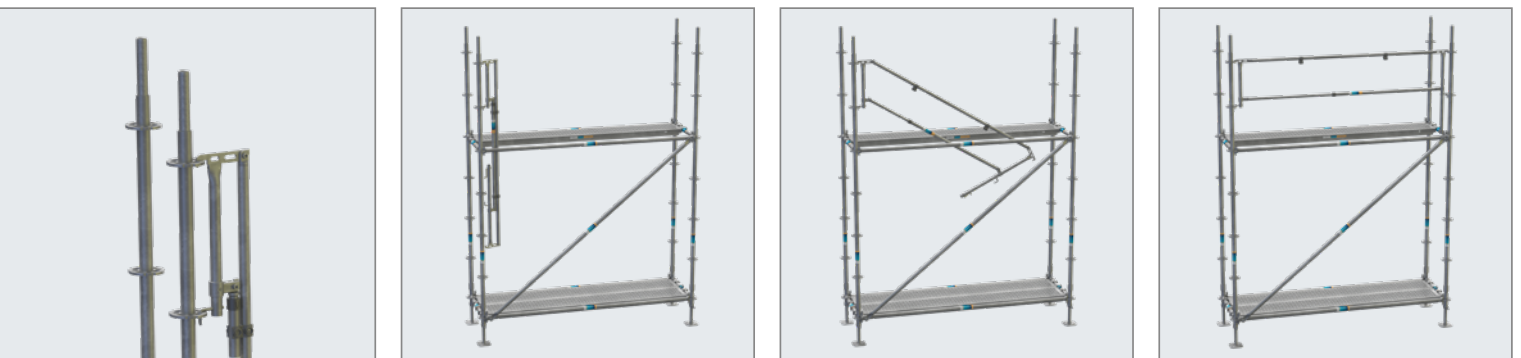


PUT IT ON, OPEN IT UP, DONE GUARDRAIL INSTALLATION EASIER THAN EVER



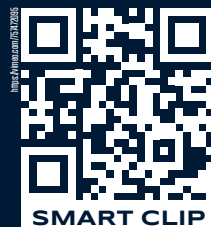
The XGR1 guardrail for SUPER and FRAMESCAFF is placed on the top tube connector of a vertical frame from the lower scaffold level, the handle is released, the guardrail folded out and latched in.

For the RINGSCAFF version, XGR1 is hooked into the node point and stabilised with a single-sided crank below the node point.



ANIMATION XGR1

Get an impression of the easy handling of XGR1.

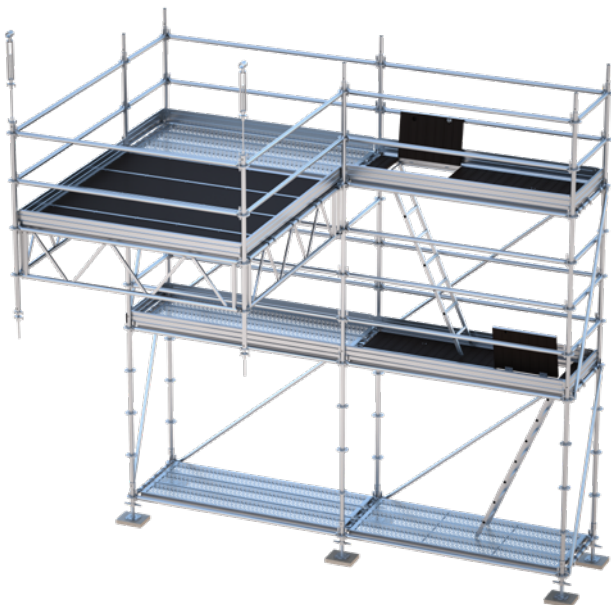


MORE SAFETY ON THE UPPER SCAFFOLD LEVEL

In order for you to be able to safely assemble and dismantle a scaffold, it is important that each scaffold level on which you move is always secured by a protective device. This can be done either by a PPE or by an advanced guard rail. This is installed from the scaffolding level below.

Safe scaffold assembly does not necessarily have to be at the expense of time-efficiency. The XGR1 expandable guardrail not only creates the advanced side protection, but is also particularly fast to assemble and dismantle. It safely implements the regulations of common safety standards, such as the German TRBS 2121, or recommendations for assembly and dismantling, such as those of the British HSE and PASMA.

MORE SCAFOM-RUX PRODUCTS FOR SAFE ADVANCED SIDE PROTECTION:



RINGSCAFF SKY

The RINGSCAFF Sky suspended scaffold uses swing-out lattice girders to provide advanced side protection.

SUPER RS

The SUPER RS modular facade scaffolding system efficiently implements the requirements of TRBS 2121 - and does so with existing material and only few new parts.

